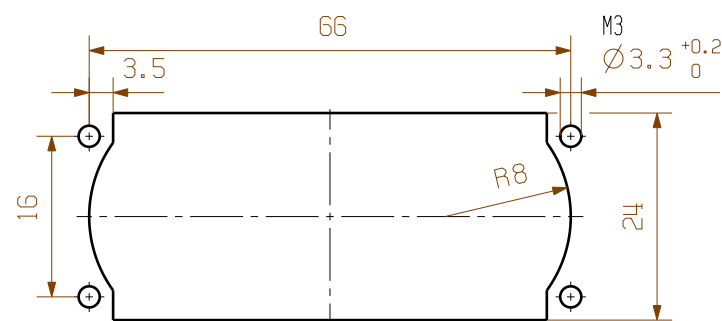
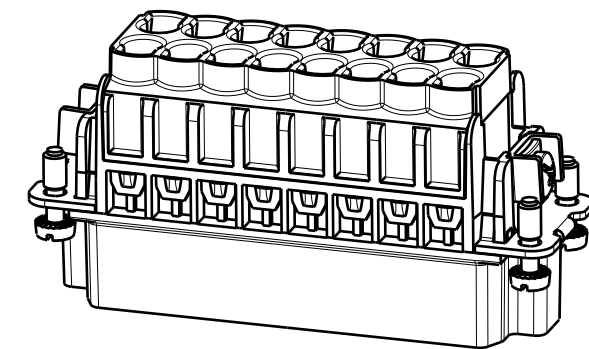
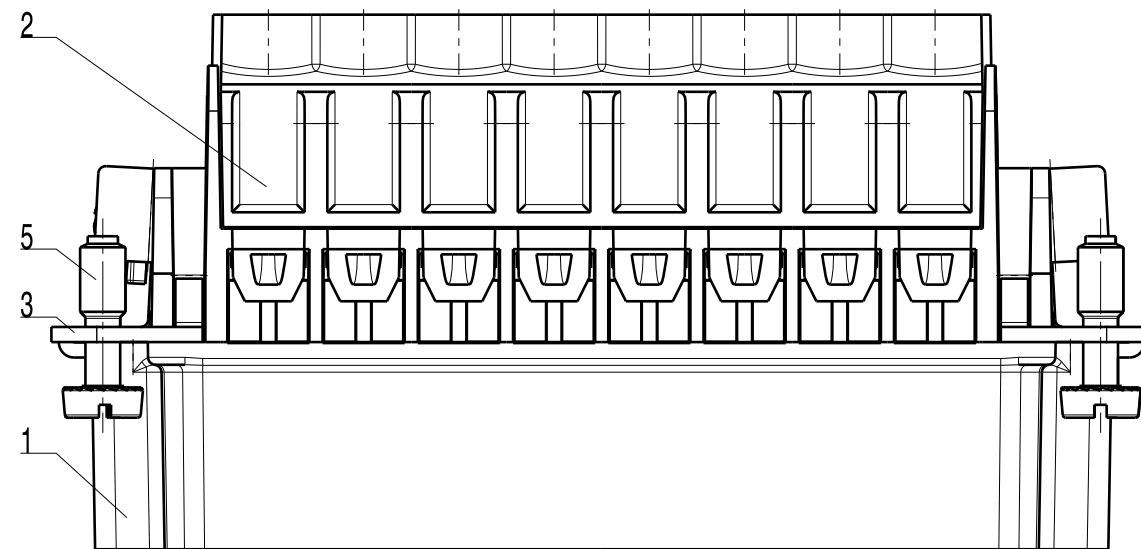
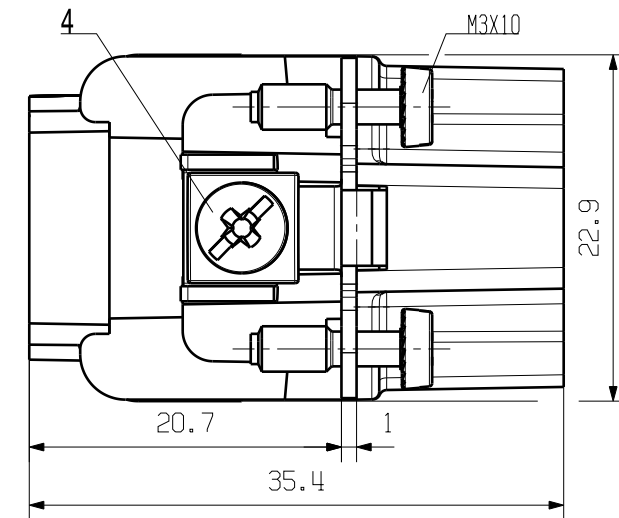
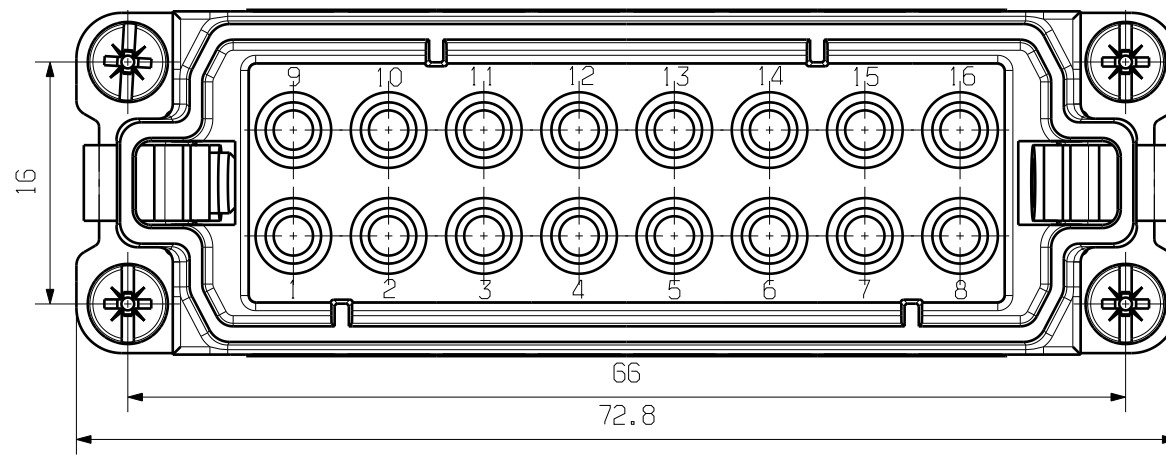


MASSE OHNE TOLERANZ SIND KEINE PRUEFMASSE  
 DIMS. WITHOUT TOLERANCE ARE NOT CONTROL DIMS.

WEITERGABE SOWIE VERVIELFÄLTIGUNG DIESES DOKUMENTS, VERWERTUNG UND MITTEILUNG SEINES INHALTS SIND VERBOTEN, SOWEIT NICHT AUSDRUECKLICH GESTATET.  
 ZUWIDERHANDLUNGEN VERPFLICHTEN ZU SCHADENSERSATZ. ALLE RECHTE FUER DEN FALL DER PATENT-, GEBRAUCHSMUSTER- ODER GESCHMACKSMUSTEREINTRAGUNG VORBEHALTEN.  
 THE REPRODUCTION, DISTRIBUTION AND UTILIZATION OF THIS DOCUMENT AS WELL AS THE COMMUNICATION OF ITS CONTENTS TO OTHERS WITHOUT EXPLICIT AUTHORIZATION IS PROHIBITED.  
 OFFENDERS WILL BE HELD LIABLE FOR THE PAYMENT OF DAMAGES. ALL RIGHTS RESERVED IN THE EVENT OF THE GRANT OF A PATENT, UTILITY MODEL OR DESIGN.



MOTAGEAUSSCHNITT  
 MOUNTING CUT-OUT

250V

16A

BEMESS.SPANNUNG  
 RATED VOLTAGE

BEMESS.STROM  
 RATED CURRENT

5	SCREW	STEEL WITH NICKLE PLATING
4	SCREW	STEEL WITH NICKLE PLATING
3	PE CONTACT	BRASS WITH NICKLE PLATING
2	COVER	PC
1	CONTACT CARRIER	PC
ROHSTOFF-NR. R.PART NO.	TYP PART NAME	WERKSTOFF MATERIAL

		<b>MODIFICATION</b>		<b>Weidmüller</b>		CAT.NO.: 187389000	
		DATE	NAME	DRAWING NO.		ISSUE NO.	
SCALE: 2/1		DRAWN	24.10.2005	LIU_F	<b>HDC HA 16 MC</b> Stifteinsatz Male Insert		
SUPERSEDES:		CHECKED	31.10.2005	Zhang_T			
SUPERSEDED BY:		APPROVED					
PRODUCT FILE:							